

## Minerva Corp. of America

Model: W117, Late

Chassis:

Year: Pre 1948

Power:

Circuit:

IF:

Tubes:

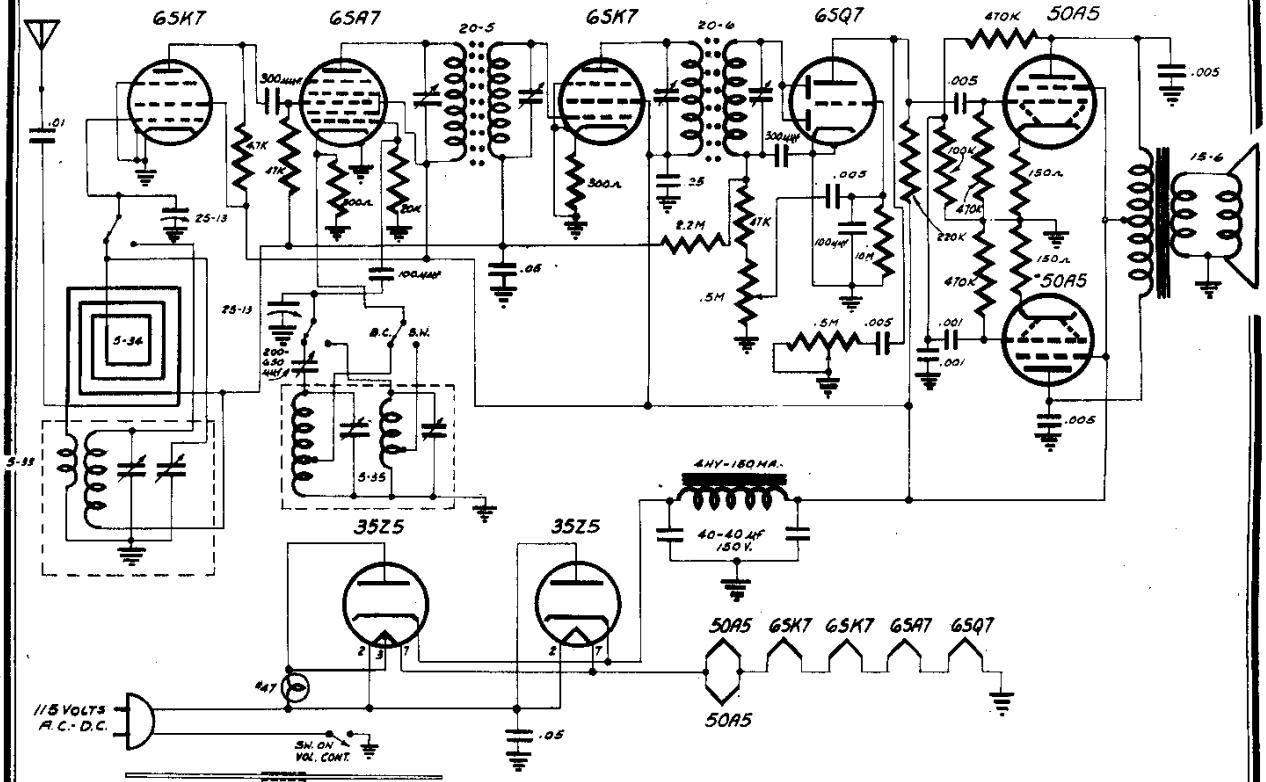
Bands:

### Resources

[Riders Volume 15 - MINERVA 15-5](#)

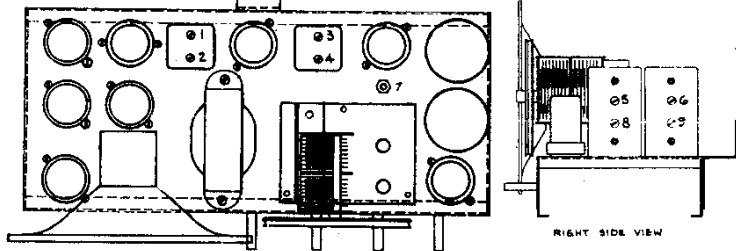
[Riders Volume 15 - MINERVA 15-6](#)

MINERVA CORP. OF AMERICA



Tube Complement:—

- 1 — 6SK7 RF Amplifier
- 1 — 6SA7 Converter
- 1 — 6SK7 IF Amplifier
- 1 — 6SQ7 2nd Detector, AVC, 1st Audio
- 2 — 50A5 Power Amplifiers
- 2 — 35Z5 Rectifiers



GENERATOR CONNECTION	DUMMY ANT.	FREQ.	ADJ. TRIMMERS	OUTPUT
Stator front section	.1 MFD Cond.	455 KC	1, 2, 3, 4	Max.
Antenna Post	200 MMF Cond.	1500 KC	6, 5	Max.
Antenna Post	200 MMF Cond.	600 KC	7 rockgang	Max.
Antenna Post	200 MMF Cond.	1500 KC	6, 5	Max.
Antenna Post	400 ohm Res.	18 MC	9, 8	Max.

**Tuning Range :**  
 Standard Broadcast 540-1640 Kcs.  
 International Shortwave 5.5-19 Mcs.  
**Power Supply:** 105-125 volts direct current or 50-60 cycle alternating current.  
**Power Consumption:** -60 watts.

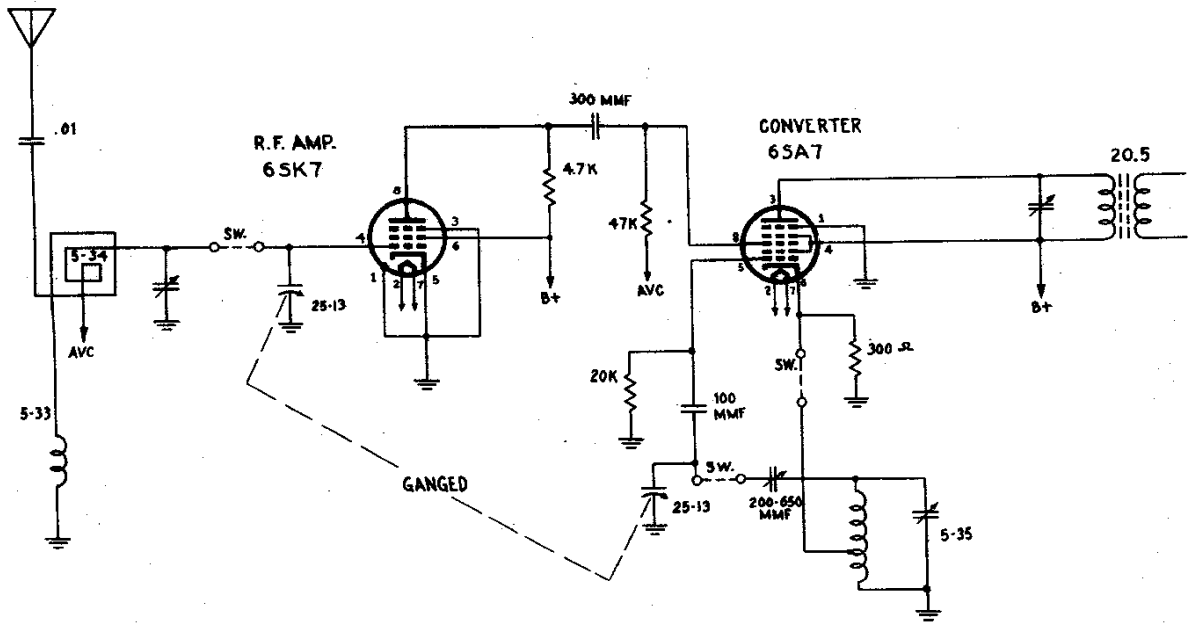
Volume control at maximum. Tone control at treble. Keep signal generator at lowest level consistent with readable output.

# "clarified schematics"

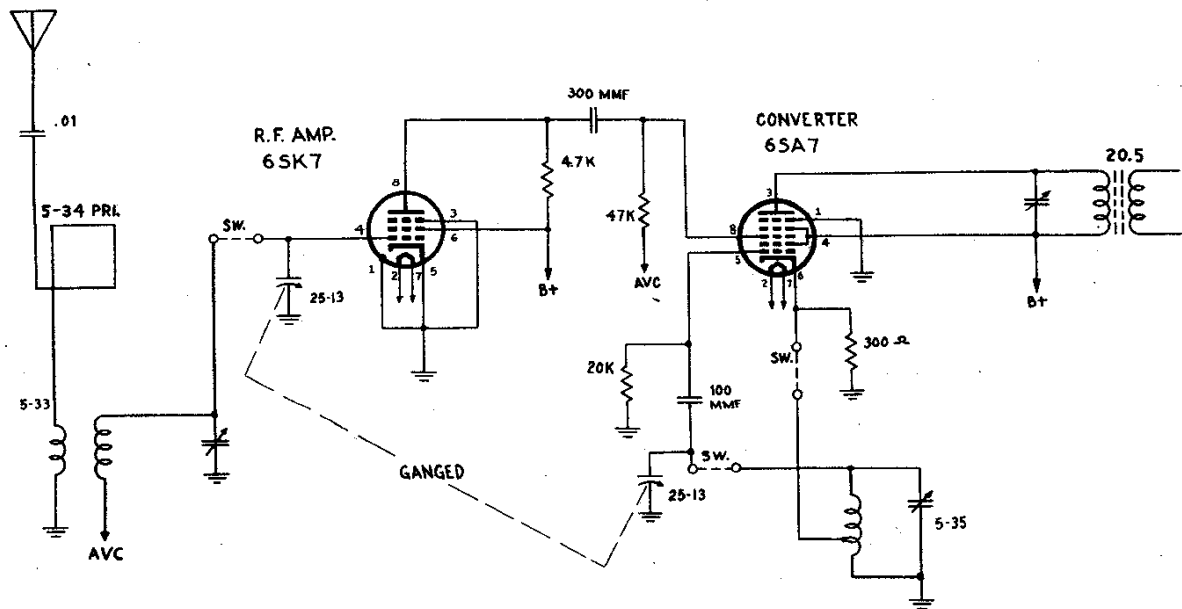
PAGE 15-6 MINERVA

MODEL W117 Late

MINERVA CORP. OF AMERICA



BAND-SWITCH SHOWN  
AT 1<sup>ST</sup> POSITION.  
BROADCAST BAND  
540-1640 KC.



BAND-SWITCH SHOWN  
AT 2<sup>ND</sup> POSITION.  
SHORT WAVE BAND  
5.5-19 MC