

Philco Radio & Television Corp.

Model: 52

Chassis:

Year:

Power:

Circuit:

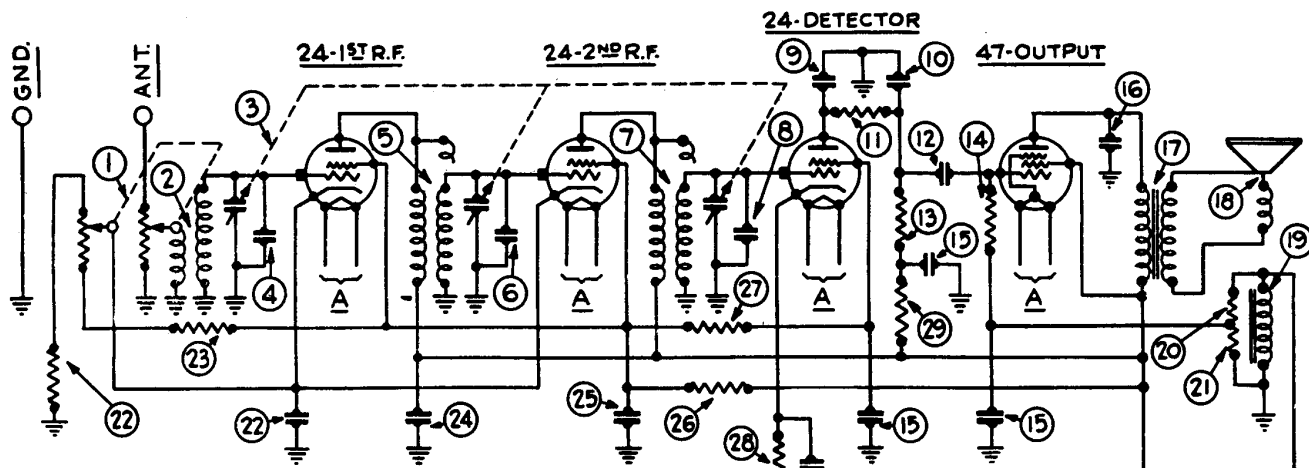
IF:

Tubes:

Bands:

Resources

[Radio College Of Canada - PHILCO 10](#)



①	.00025	②	150 and .05
②	.01	③	10,000
③	.05	④	15,000
④	.05 and 150 Ohm resistor	⑤	25,000
⑤	.1, .15, .25, 2-5 (50-60 cycles)	⑥	32,000
⑥	.05, .15, .25, 2-5 (25-40 cycles)	⑦	99,000
⑦	.05	⑧	160,000
⑧	(50 to 60 cycles) 6.	⑨	240,000
⑨	(25 to 40 cycles) 10.	⑩	490,000
⑩		⑪	

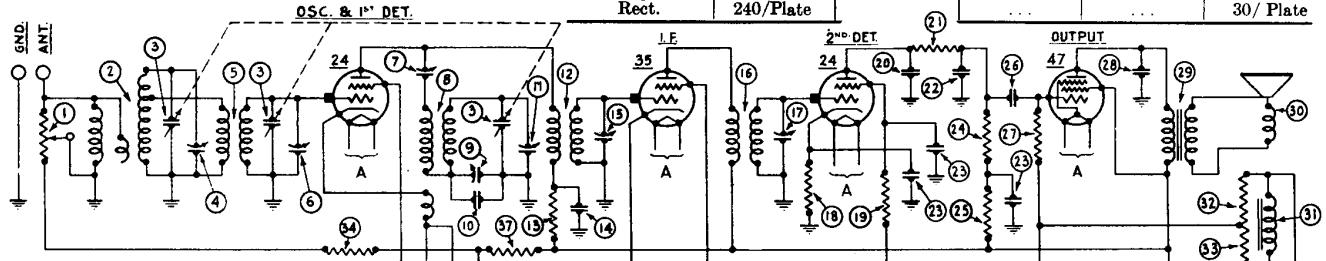
Tube	Plate Volts	Screen Grid Volts	Control Grid Volts	Cathode Volts	Plate Milli-amperes
1st R.F.	245	90	2.5	3.0	4.5
2nd R.F.	250	90	2.5	3.0	5.5
Det.	100	42	8.0	8.0	0
Output	175*	190*	1.0*	...	2.7*

● I.R.F. FRONT 1931-32

PHILCO MODELS 50 AND 50-A

- 2.R.F.
- DET
- RECT
- PWR

Tube	Plate Volts	Screen Grid Volts	Control Grid Volts	Cathode Volts	Plate Milli-amperes
Osc. & 1st Det.	220*	85*	9.0*	9.0*	...
I.F.	210	85	3.0	3.0	6.2
2nd Det.	75	54	5.2	5.2	0
Output	210**	240**	0.2**	...	28.**
					30/ Plate



①	250 and .05 Mfd.	②	1,000
②		③	8,000
③		④	10,000
④		⑤	25,000
⑤		⑥	32,000
⑥		⑦	32,000
⑦		⑧	51,000
⑧		⑨	99,000
⑨		⑩	160,000
⑩		⑪	490,000
⑪		⑫	.00025
⑫		⑬	.00011
⑬		⑭	.01
⑭		⑮	.05
⑮		⑯	.1, .15, .25, 2-5 (50-60 cy.)
⑯		⑰	.2, .15, .25, 2-5 (25-40 cy.)
⑰		⑱	6 (50-60 cycles)
⑱		⑲	10 (25-40 cycles)
⑲		⑳	6

- I.F. 175 Kc**
- 2.DET
 - I.F.
 - OSC & 1.DET
 - RECT.
 - PWR

PHILCO MODELS 51 - 51-A
1932-33 52 AND 52-A.

Printed in Canada

—Courtesy Philco Products Ltd. of Canada