

General Electric Co.

Model: 107W

Chassis:

Year: Pre 1950

Power:

Circuit:

IF:

Tubes:

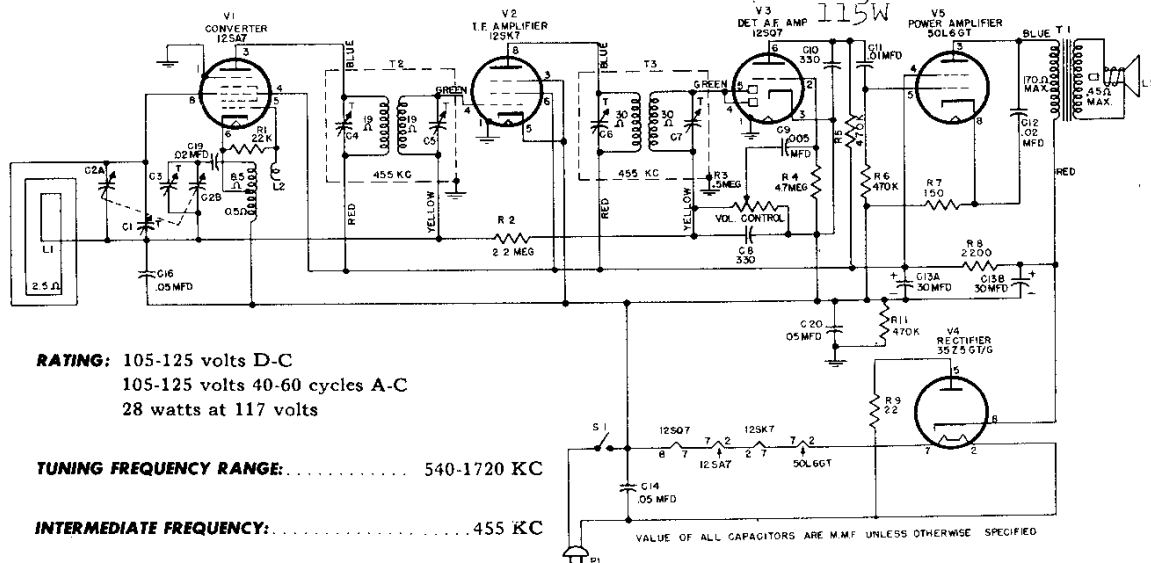
Bands:

Resources

Riders Volume 18 - GE 18-13

Riders Volume 18 - GE 18-14

GENERAL ELECTRIC CO. MODELS 102, 102W, 107,
107W, 114, 114W, 115,
115W



RATING: 105-125 volts D-C
105-125 volts 40-60 cycles A-C
28 watts at 117 volts

TUNING FREQUENCY RANGE: 540-1720 KC

INTERMEDIATE FREQUENCY: 455 KC

ALIGNMENT PROCEDURE

ALIGNMENT FREQUENCIES

I-F.....455 KC
R-F.....1720 and 1500 KC

The location of all trimmers is shown in Fig. 1.

I-F ALIGNMENT

Connect an output meter across the voice coil. Turn the volume control to maximum. Set test oscillator to 455 KC and keep the oscillator output as low as a readable meter reading will permit. Apply signal to the converter grid through a .05 mfd. capacitor and align progressively the trimmers in the 2nd and 1st I-F transformer cans.

R-F ALIGNMENT

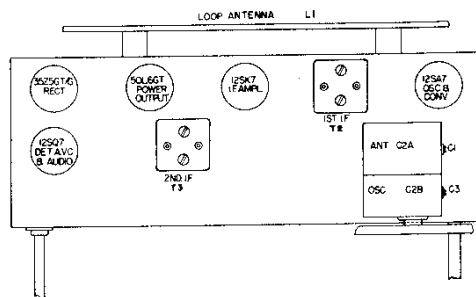
Apply the R-F alignment signals through a standard IRE dummy antenna to the primary on the loop. With the gang condenser wide open, align the oscillator trimmer (C3) to 1720 KC. Change the generator signal to 1500 KC, tune the receiver to the signal and peak the antenna trimmer (C1) for maximum output.

PRECAUTION

If the signal generator is A-C operated, use an isolating transformer between the power supply and the radio receiver power input. The use of an isolating capacitor is not recommended, as A-C through the capacitor will introduce hum modulation and/or create the possibility of a burned-out signal generator attenuator.

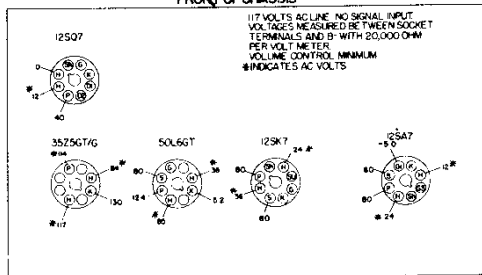
LOUDSPEAKER "ALNICO V" MAGNET DYNAMIC

Outside Cone Diameter.....4 in.
Voice Coil Impedance (400 cyc).....3.2 ohms



Tube and Trimmer Location

FRONT VIEW OF CHASSIS



BOTTOM VIEW OF CHASSIS

Socket Voltage Diagram

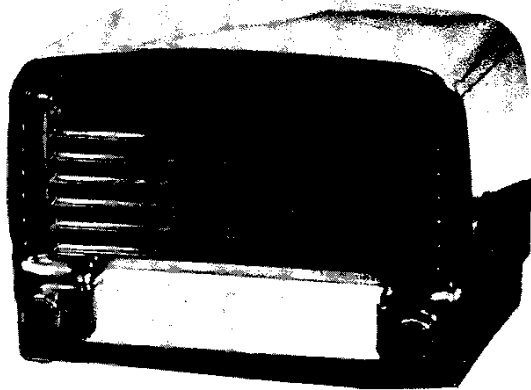
GENERAL INFORMATION

These models are 5-tube (including rectifier) superheterodyne receivers in distinctively styled brown plastic and white urea cabinets. These receivers incorporate built-in antenna, automatic volume control, oversize permanent magnet speaker and beam power output.

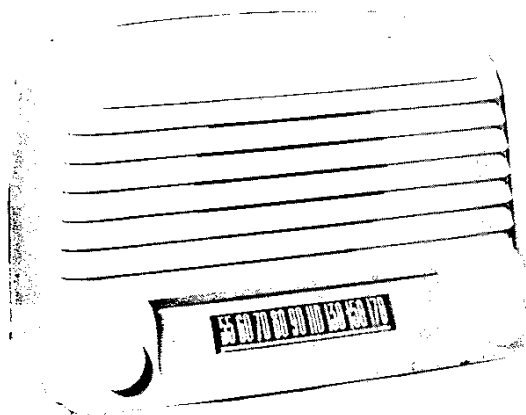
TUBES

Converter and Oscillator.....12SA7
I.F. Amplifier.....12SK7
Det. Audio, AVC.....12SQ7
Power Output.....50L6GT
Rectifier.....35Z5GT

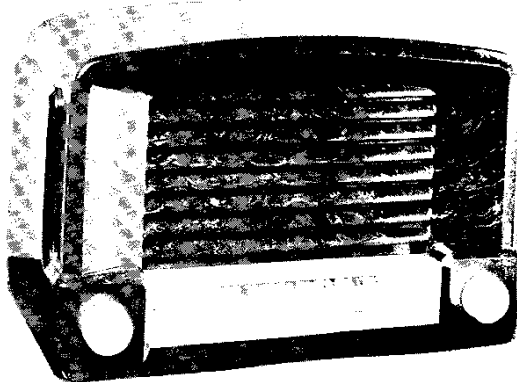
MODELS 102, 102W, 107, GENERAL ELECTRIC CO.
107W, 114, 114W, 115, 115W



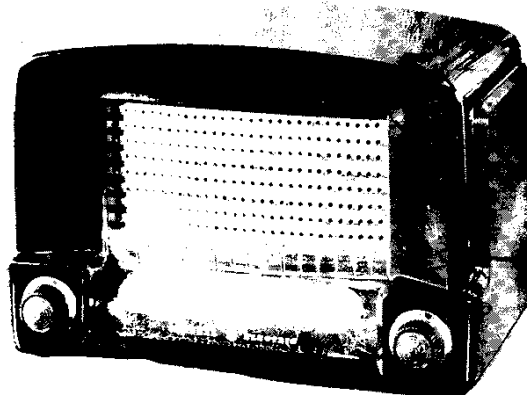
MODEL 102



MODEL 107W



MODEL 114



MODEL 115

Cat. No.	Symbol	Description
UNIVERSAL REPLACEMENT PARTS		
UCC-625	C9	CAPACITOR—.005 mf., 600 v., paper
UCC-630	C11, 17	CAPACITOR—.01 mf., 600 v., paper
UCC-631	C12, 19	CAPACITOR—.02 mf., 600 v., paper
UCC-635	C14, 16, 20	CAPACITOR—.05 mf., 600 v., paper
UCU-040	C8, 10	CAPACITOR—330 mmf., mica
UOP-487		SPEAKER—4-inch PM speaker, same as S403D7
UOX-009		SPEAKER REPAIR KIT
URD-009	R9	RESISTOR—22 ohms, 1/2 w., carbon
URD-029	R7	RESISTOR—150 ohms, 1/2 w., carbon
URD-081	R1	RESISTOR—22,000 ohms, 1/2 w., carbon
URD-113	R5, 6, 11	RESISTOR—470,000 ohms, 1/2 w., carbon
URD-129	R2	RESISTOR—2.2 meg., 1/2 w., carbon
URD-137	R4	RESISTOR—4.7 meg., 1/2 w., carbon
URF-037	R8	RESISTOR—330 ohms, 2 w., carbon

Cat. No.	Symbol	Description
SPECIALIZED REPLACEMENT PARTS		
RAB-070	L1	BACK—Cabinet back with loop
RAU-028		CABINET—Brown (Model 102)
RAU-029		CABINET—Brown (Model 107)
RAU-030		CABINET—Brown (Model 115)
RAU-031		CABINET—Ivory (Model 115W)
RAU-032		CABINET—Ivory (Model 114W)
RAU-033		CABINET—Brown (Model 114)
RAU-034		CABINET—Ivory (Model 107W)
RAU-035		CABINET—Ivory (Model 102W)
RCT-029	C1, 2A, 2B, C3	CAPACITOR—2-section tuning capacitor
RDC-033		CORD—Dial drive cord, 10 yds min.

Cat. No.	Symbol	Description
SPECIALIZED REPLACEMENT PARTS (Cont'd)		
RDK-020		KNOB—Control knob, Models 102W, 107W, 114W for knurled shaft
RDK-031		KNOB—Control knob for 102, 107, and 114 for knurled shaft
RDK-121		KNOB—Control knob for Model 115 for knurled shaft
RDK-122		KNOB—Control knob for Model 115W for knurled shaft
RDS-063		SCALE—Dial scale for Models 115 and 115W
RHG-017		GROMMET—(3 used for mounting tuning capacitor)
RHH-004		SNAP FASTENER—For mounting cabinet back to cabinet
RHJ-005		SPACER—For mounting tuning capacitor
RHM-046		CLIP—For mounting dial scale
RJS-003		SOCKET—Octal tube socket
RMW-040		PULLEY—Idler pulley for dial cord
RRC-077	R3, S1	CONTROL—Volume control, includes power switch with knurled shaft
SCE-001	C13A, B	CAPACITOR—30 mf., 150 v.; 30 mf., 150 v., dry electrolytic
SDK-011		KNOB—White, for flat shaft
SDP-001		POINTER—Dial scale pointer
SDS-019		SCALE—Dial scale for Models 102, 107W, 107, 107W, 114, and 114W
SLC-020	L4	COIL—Oscillator coil
SMS-013		SPRING—Dial cord tension spring
SRC-003	R3, S1	VOLUME CONTROL and switch with flat shaft
STL-007	T2	TRANSFORMER—1st IF transformer
STL-008	T3	TRANSFORMER—2nd IF transformer
STO-005	T1	TRANSFORMER—Output transformer
SWL-001		CORD—Power cord