

Sparks-Withington Co.

Model: 69

Chassis:

Year: Pre 1932

Power:

Circuit:

IF:

Tubes:

Bands:

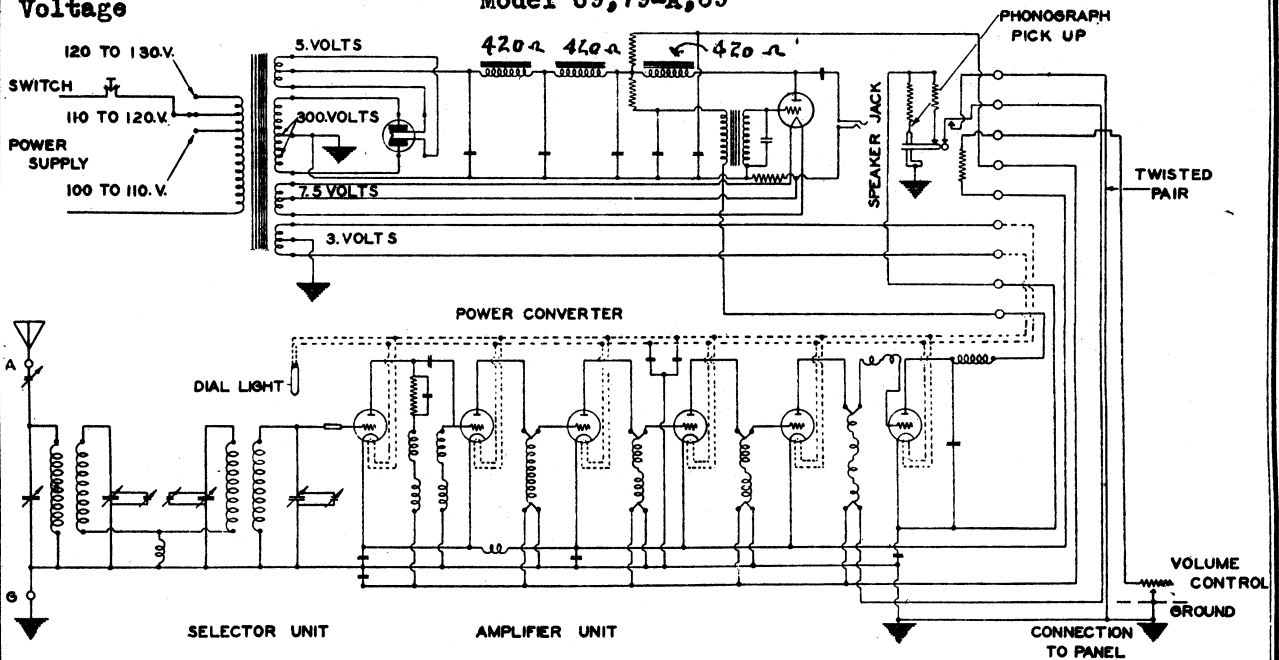
Resources

Riders Volume 1 - SPARTON 1-7

MODEL 69,79-A,89
Schematic
MODEL 89-A
Schematic
Voltage

SPARKS WITHINGTON CO.

Model 69,79-A,89

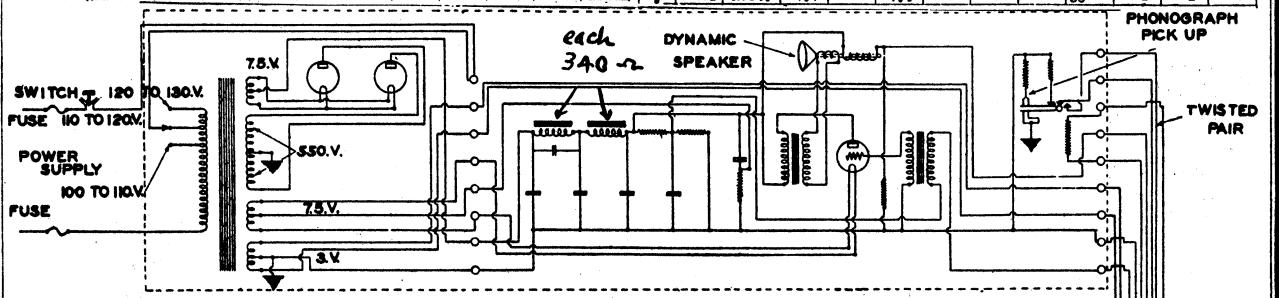


SPARTON—Model 79-A-89 - 69
Line Voltage 120—Volume Control Full

SPARTON—Model 89-A
Line Voltage 120—Volume Control Full

TUBE NO. IN ORDER	TYPE OF TUBE	POSITION OF TUBE 1ST. RF. DET., ETC.	READINGS, PLUG IN SOCKET OF SET													
			TUBE OUT			TUBE IN TESTER										
			A VOLTS	B VOLTS	C VOLTS	CATHODE HEATER VOLTS	NORMAL PLATE M.A.	PLATE CHANGE M.A.	SCREEN GRID M.A.	SCREEN GRID VOLTS						
1	C-484	1st RF	3.2	158	3	128	9	7.8	10.6	3.6						
2	C-484	2nd RF	3.2	160	3	158	9	7.8	13.5	5.2						
3	C-484	3rd RF	3.2	158	3	158	9	5.5	10.8	5.3						
4	C-484	4th RF	3.2	160	3	158	9	7.9	14.4	6.5						
5	C-484	5th RF	3.2	160	3	158	9	7.4	13.2	5.8						
6	C-484	Det.	3.2	245	3	220	10	1.7	8.0	4.3						
7	585	P. Aud.	7.6	310	7.4	220	38	25	29	4						
8	280	Rect.	5.5	-	5.1	-	-	28	-	-						

TUBE NO. IN ORDER	TYPE OF TUBE	POSITION OF TUBE 1ST. RF. DET., ETC.	READINGS, PLUG IN SOCKET OF SET													
			TUBE OUT			TUBE IN TESTER										
			A VOLTS	B VOLTS	C VOLTS	CATHODE HEATER VOLTS	NORMAL PLATE M.A.	PLATE CHANGE M.A.	SCREEN GRID M.A.	SCREEN GRID VOLTS						
1	C-484	1st RF	3.1	145	3	120	9	6.7	10.7	4						
2	C-484	2nd RF	3.1	145	3	140	9	7.5	12.5	5						
3	C-484	3rd RF	3.1	145	3	138	9	8	13.3	5.3						
4	C-484	4th RF	3.1	145	3	138	9	6.5	12.2	5.7						
5	C-484	5th RF	3.1	145	3	138	9	7.6	13	5.4						
6	C-484	6th RF	3.1	145	3	138	9	6.6	13	5.4						
7	C-484	Det.	3.1	260	3	240	25	1.5	7.2	5.7						
8	585	Audio	7.7	535	7.4	390	62	52	57	5						
9	281	Rect.	7.7	-	7.4	-	-	58	-	-						
10	281	Rect.	7.7	-	7.4	-	-	58	-	-						



POWER CONVERTER Model 89-A

