

Noblitt-Sparks Industries, Inc.

Model: 402

Chassis:

Year: Pre June 1940

Power:

Circuit:

IF:

Tubes:

Bands:

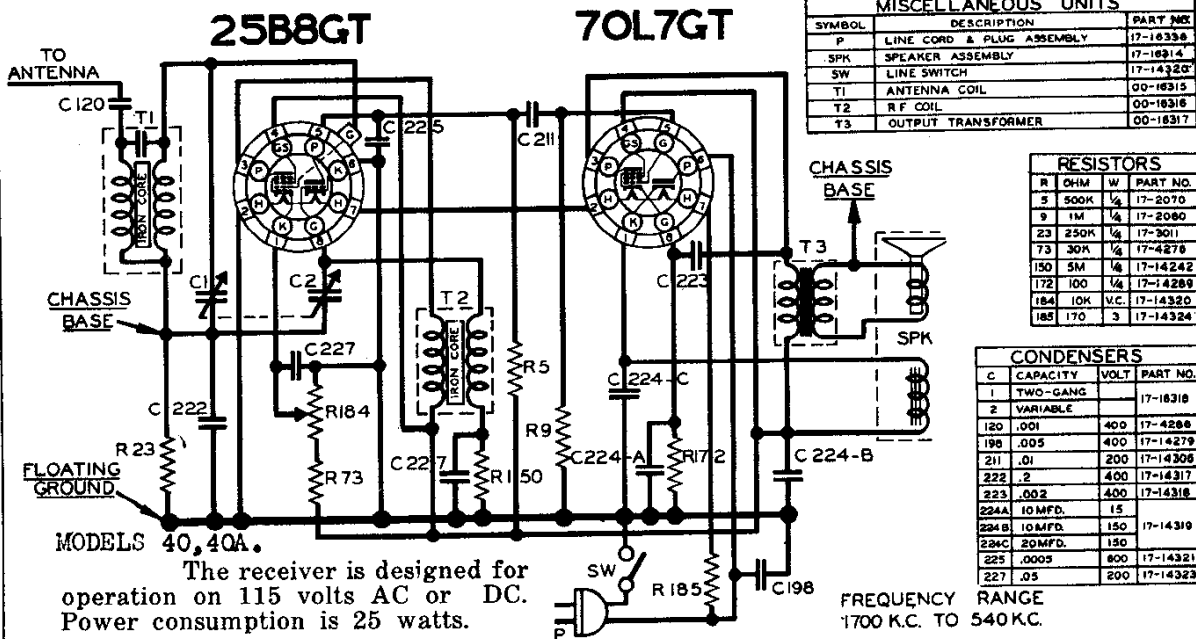
Resources

Riders Volume 11 - ARVIN 11-3

NOBLITT-SPARKS INDUSTRIES, INC.

MODELS 40,40A
MODELS 402,402A
Ch. RE-55

Schematics



MISCELLANEOUS UNITS		
SYMBOL	DESCRIPTION	PART NO.
P	LINE CORD & PLUG ASSEMBLY	17-16358
SPK	SPEAKER ASSEMBLY	17-16314
SW	LINE SWITCH	17-14320
T1	ANTENNA COIL	00-16315
T2	R.F. COIL	00-16316
T3	OUTPUT TRANSFORMER	00-16317

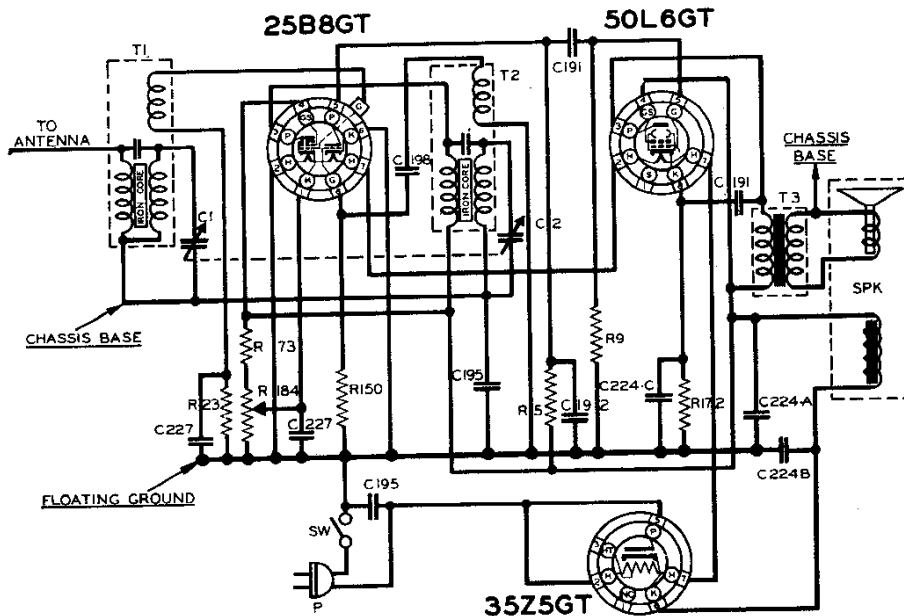
RESISTORS			
R	OHM	W	PART NO.
3	500K	1/4	17-2070
9	1M	1/4	17-2080
23	250K	1/4	17-3011
73	30K	1/4	17-4276
150	5M	1/4	17-14242
172	100	1/4	17-14289
184	10K	V.C.	17-14320
185	170	3	17-14324

CONDENSERS			
C	CAPACITY	VOLT	PART NO.
1	TWO-GANG		17-16318
2	VARIABLE		
120	.001	400	17-4288
198	.005	400	17-14279
211	.01	200	17-14308
222	.2	400	17-14317
223	.002	400	17-14318
224A	10 MFD.	15	
224B	10 MFD.	150	17-14310
224C	20 MFD.	150	
225	.0005	800	17-14321
227	.05	200	17-14323

MODELS 40,40A.

The receiver is designed for operation on 115 volts AC or DC. Power consumption is 25 watts.

FREQUENCY RANGE
1700 K.C. TO 540 K.C.



RESISTORS			CONDENSERS			MISCELLANEOUS UNITS				
R	OHM	W	PART NO.	C	CAPACITY	VOLT	PART NO.	SYMBOL	DESCRIPTION	PART NO.
3	500K	1/4	17-2070	1	TWO-GANG		17-16318	P	LINE CORD & PLUG ASSEMBLY	17-16358
9	1M	1/4	17-2080	2	VARIABLE			SPK	SPEAKER ASSEMBLY	17-16314
23	250K	1/4	17-3011	191	.01	400	17-14272	SW	LINE SWITCH	17-14320
73	30K	1/4	17-4276	192	.00025	800	17-14273	T1	ANTENNA COIL	00-16315
150	5M	1/4	17-14242	193	.05	400	17-14274	T2	R.F. COIL	00-16316
172	100	1/4	17-14289	198	.005	400	17-14279	T3	OUTPUT TRANSFORMER	00-16317
184	10K	V.C.	17-14320	224A	10 MFD.	150				
				224B	20 MFD.	150	17-14310			
				224C	20 MFD.	150				
				227	.05	200	17-14323			

MODELS 402,402A CHASSIS RE-55.

The receiver is designed for operation on 115 volts AC or DC. Power consumption is 25 watts.

FREQUENCY RANGE
1700 K.C. TO 540 K.C.
NOBLITT-SPARKS INDUSTRIES, INC.,
COLUMBUS, INDIANA.