

Atwater Kent

Model: 55C

Chassis:

Year: Pre 1932

Power:

Circuit:

IF:

Tubes:

Bands:

Resources

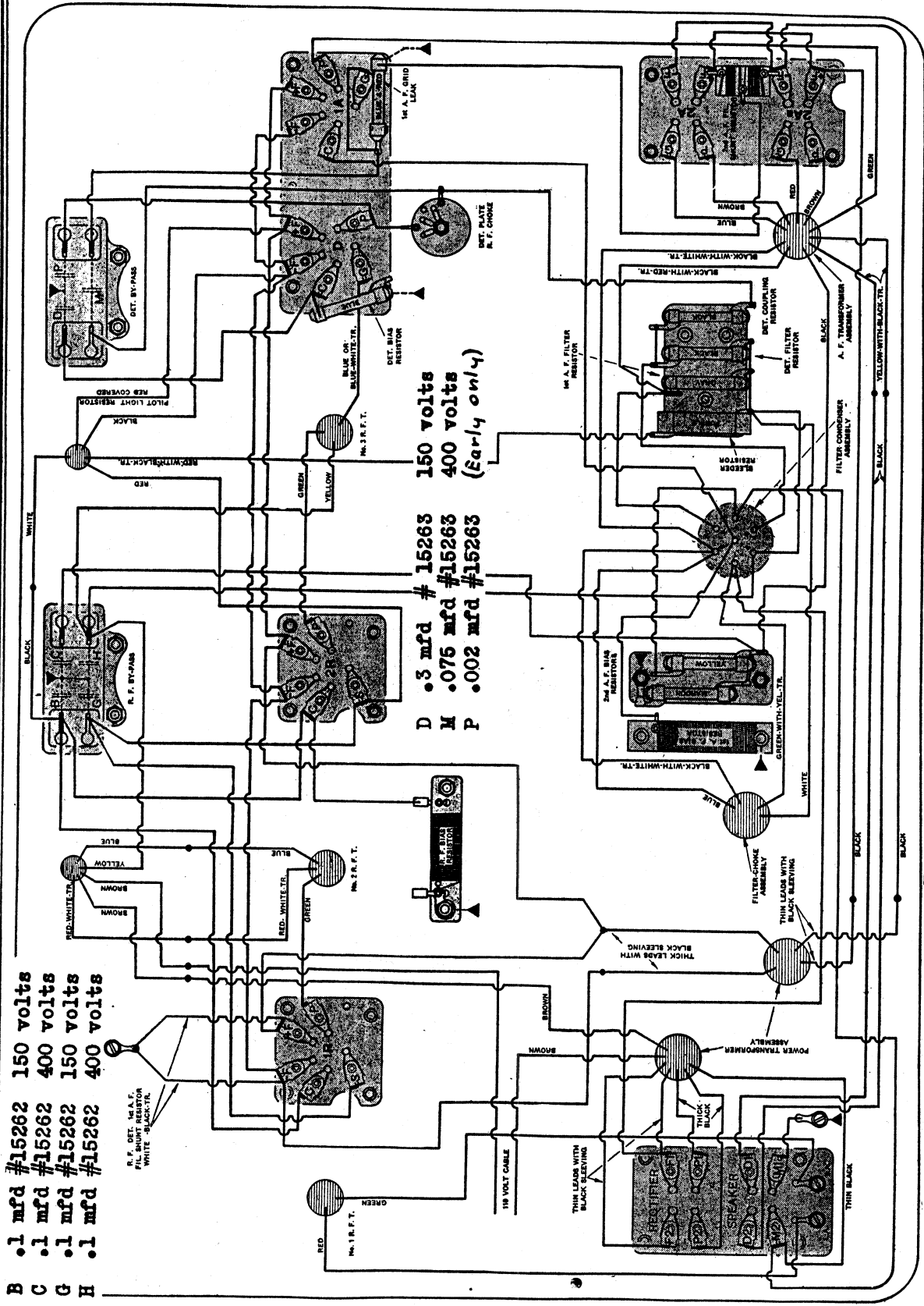
[Riders Volume 1 - A.-K. 1-17](#)

[Riders Volume 1 - A.-K. 1-18](#)

[Riders Volume 1 - A.-K. 1-19](#)

MODEL 55, 55-C
Early

ATWATER KENT MFG. CO.



- B .1 mfd #15262 150 volts
- C .1 mfd #15262 400 volts
- G .1 mfd #15262 150 volts
- H .1 mfd #15262 400 volts

R.F. DET. 15 A.F. FIL. MOUNT RESISTOR WHITE

- D .3 mfd # 15263 150 volts
- M .075 mfd #15263 400 volts
- P .002 mfd #15263 (Early only)

BOTTOM WIRING OF EARLY-TYPE MODEL 55 AND 55-C.

This drawing shows the new-style R. F. bias resistor. In some early sets, a separate double-type phone condenser is used.

ATWATER KENT MFG. CO.

MODEL 55 and 55-C

Late

Schematic

Chassis

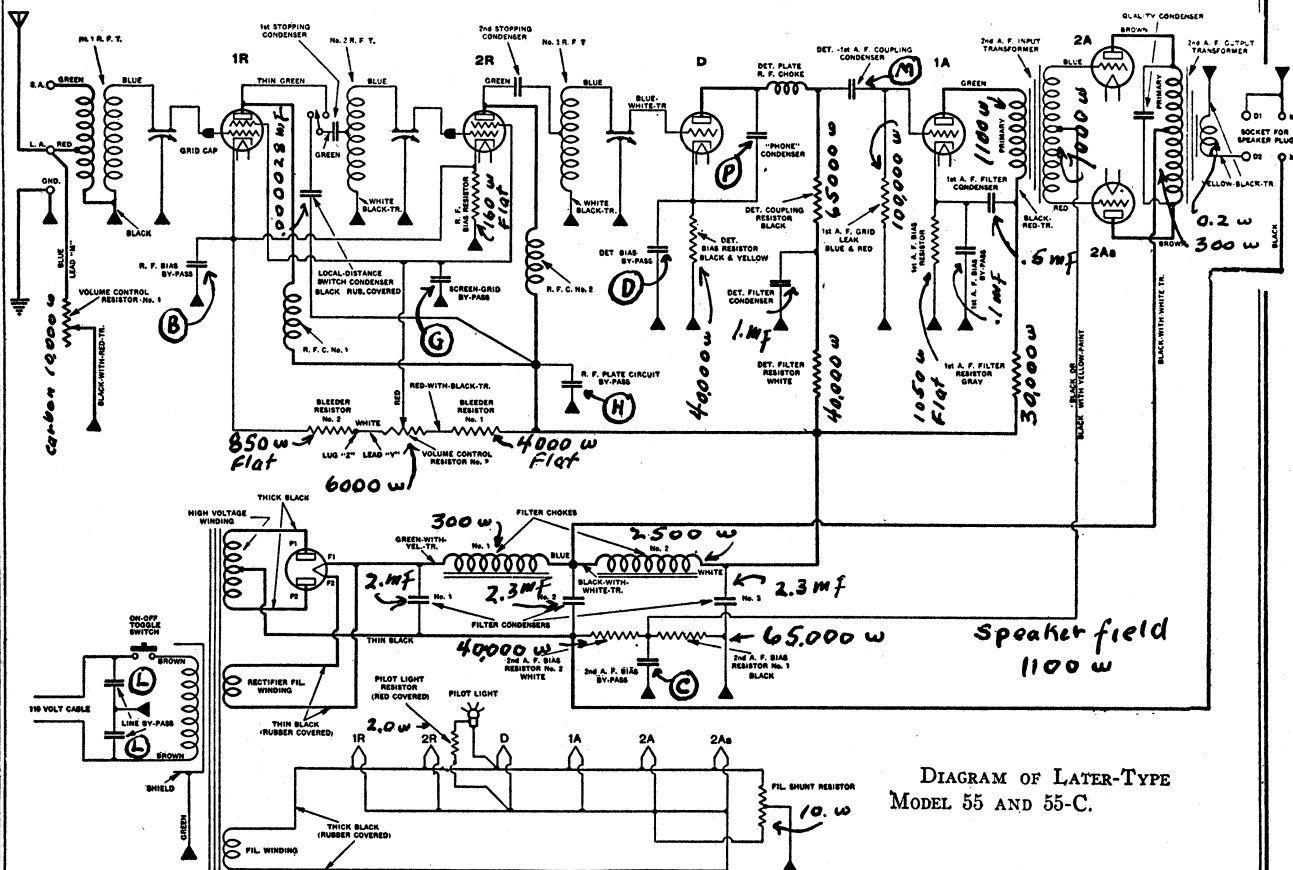
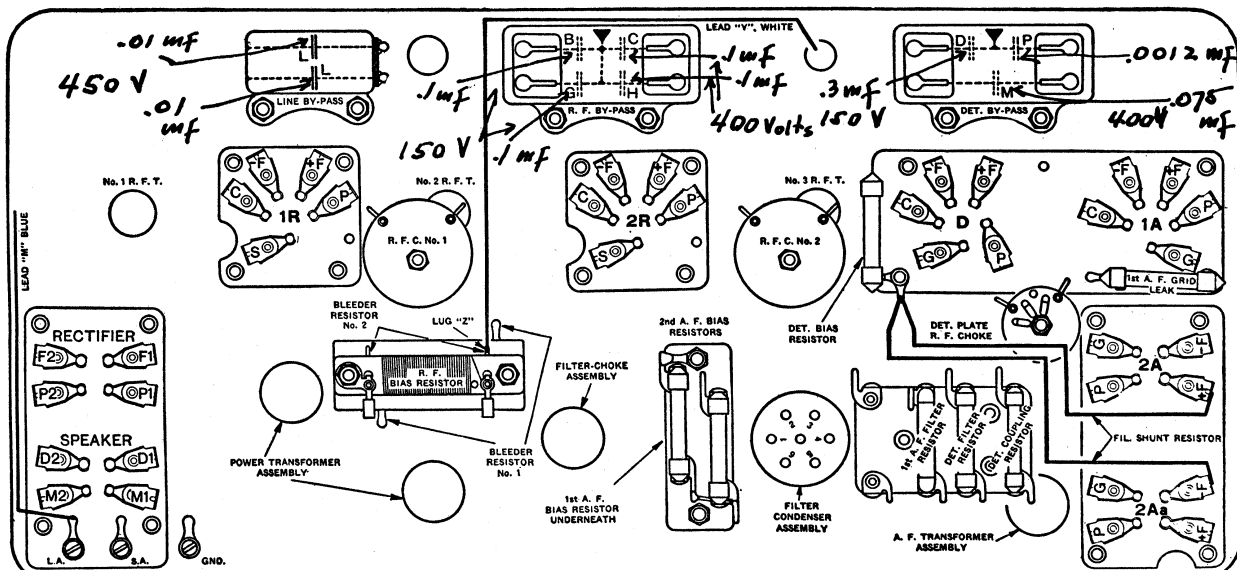


DIAGRAM OF LATER-TYPE MODEL 55 AND 55-C.



BOTTOM CHART OF LATER-TYPE MODEL 55 AND 55-C.

Courtesy Neig... Capacitor references on pages 1-17 and 1-18.