

R.C.A. Victor Co., Inc.

Model: RE-57

Chassis:

Year: Pre 1932

Power:

Circuit:

IF:

Tubes:

Bands:

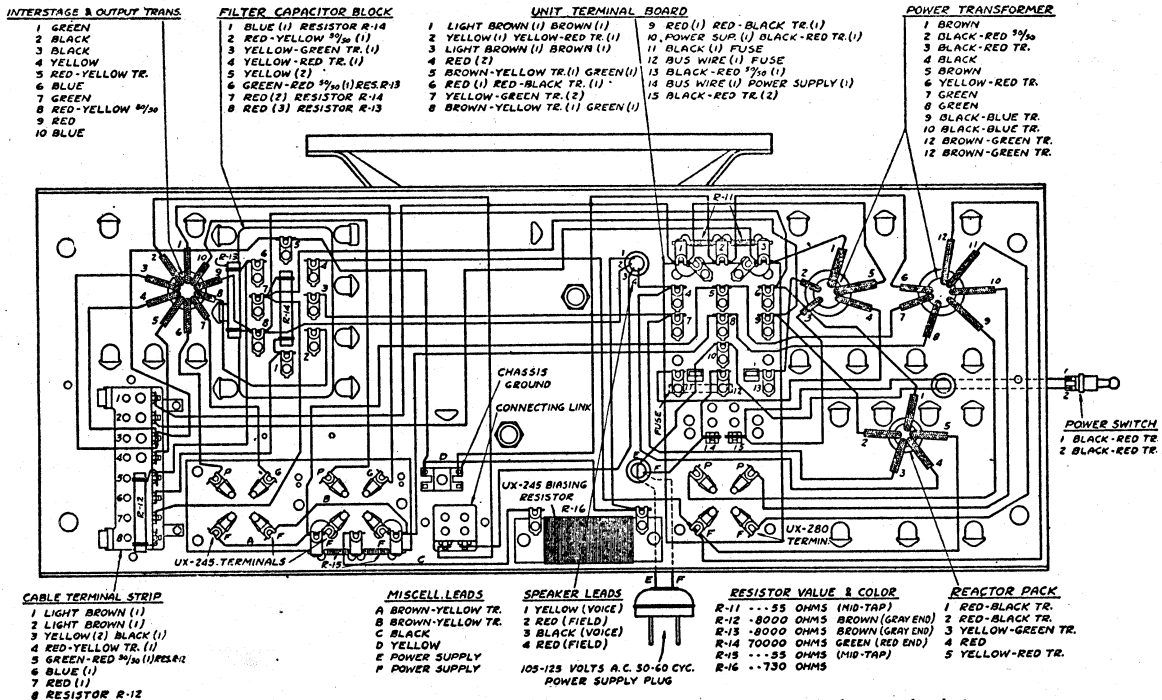
Resources

Riders Volume 1 - R. C. A. 1-29

Riders Volume 1 - R. C. A. 1-30

R. C. A. VICTOR CO., INC.

MODEL Victor R-35, R-39,
RE-57
A-F Chassis, Voltage

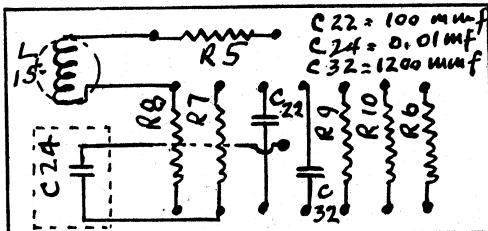
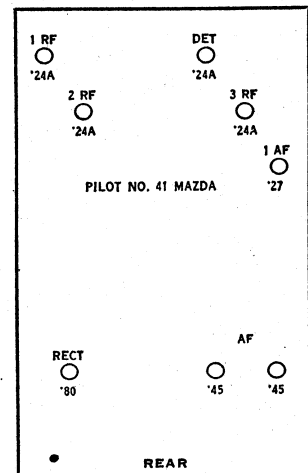


Bottom View of Amplifier-Speaker Unit, showing Wiring between Terminals.

VICTOR—Model “Micro-Synchronous”
Line Voltage 112—Voltage Tap 120—Volume Control Full

TUBE NO. IN ORDER TESTED	TYPE OF TUBE	POSITION OF TUBE IN SET	METER READINGS WITH JEWELL TEST PLUG IN SOCKET OF SET								
			FILAMENT OR HEATER	OPERATING VOLTAGES	CONTROL GRID-SPACE	NORMAL GRID-SCREEN	CATHODE TO HEATER	SCREEN GR. PLATE	PLATE	PLATE CURRENT	
1	22A	1 R.F.	2.15	172	2.5	80	-	-	2.5	5	2.5
2	22A	2 R.F.	2.15	172	2.5	80	-	-	2.5	5	2.5
3	22A	3 R.F.	2.15	172	2.5	80	-	-	2.5	5	2.5
4	22A	Det.	2.15	75*	-	2.5	8	-	-	-	-
5	227	1 A.F.	2.15	55	-	0	-	-	1.5	1.8	.3
6	245	PP-AF	2.25	185	-	36	-	-	19	22	3.0
7	245	PP-AF	2.25	185	-	36	-	-	19	22	3.0
8	280	-	4.8	-	-	-	-	-	36	36	-

Models Victors R34, R35, R39, RE57, RE73 (1930)



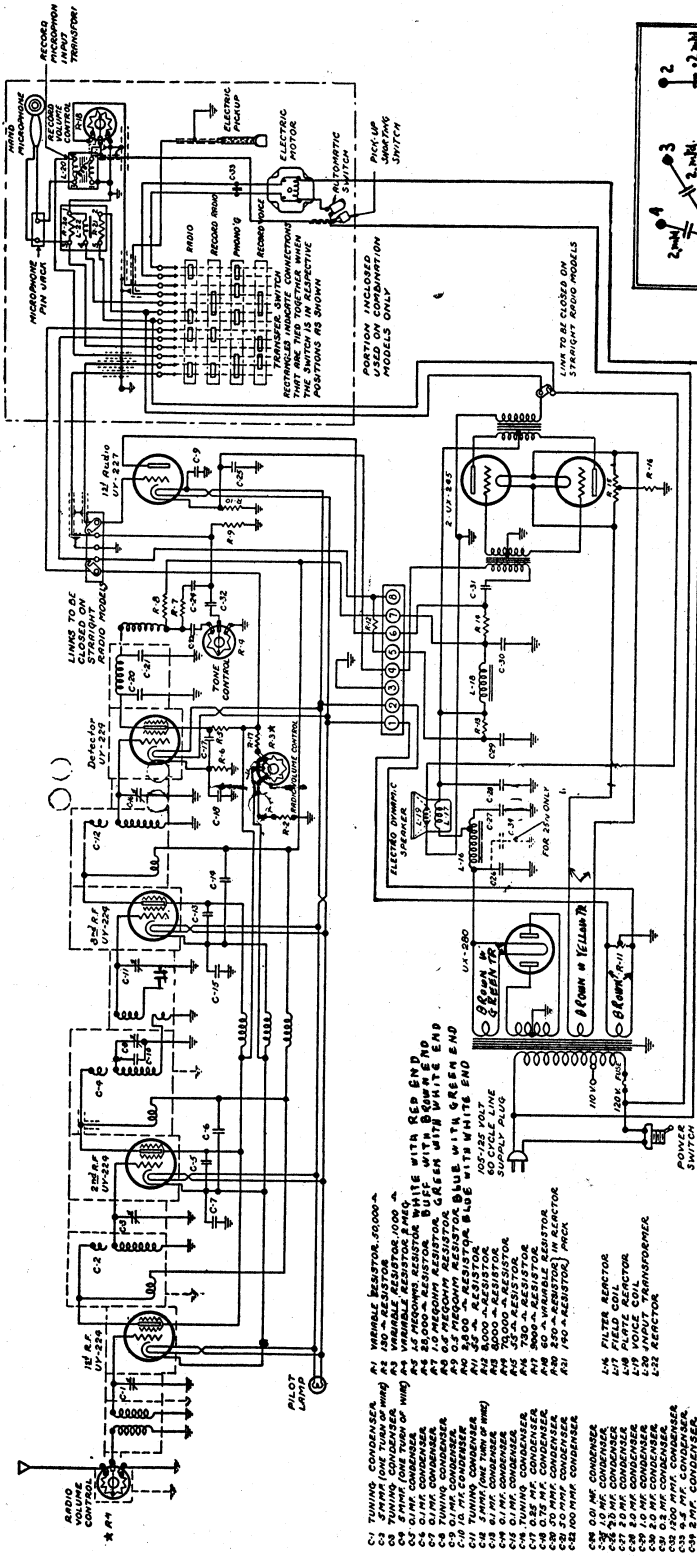
Resistor board on radio chassis.

VOLTAGES ACROSS AMPLIFIER TERMINAL STRIP

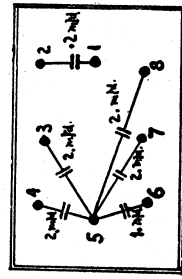
Between 1 and 2 2.6 volts AC
 3 and 7 300. volts DC (The radio chassis is disconnected during these tests)
 3 and 6 275. volts DC
 3 and 8 295. volts DC

MODEL Victor R-35, R-39
RE-57
Schematic

R. C. A. VICTOR CO., INC.



- C1 TUNING CONDENSER
- C2 250 P.F. CONDENSER
- C3 500 P.F. CONDENSER
- C4 100 P.F. CONDENSER
- C5 100 P.F. CONDENSER
- C6 100 P.F. CONDENSER
- C7 100 P.F. CONDENSER
- C8 100 P.F. CONDENSER
- C9 100 P.F. CONDENSER
- C10 100 P.F. CONDENSER
- C11 100 P.F. CONDENSER
- C12 100 P.F. CONDENSER
- C13 100 P.F. CONDENSER
- C14 100 P.F. CONDENSER
- C15 100 P.F. CONDENSER
- C16 100 P.F. CONDENSER
- C17 100 P.F. CONDENSER
- C18 100 P.F. CONDENSER
- C19 100 P.F. CONDENSER
- C20 100 P.F. CONDENSER
- C21 100 P.F. CONDENSER
- C22 100 P.F. CONDENSER
- C23 100 P.F. CONDENSER
- C24 100 P.F. CONDENSER
- C25 100 P.F. CONDENSER
- C26 100 P.F. CONDENSER
- C27 100 P.F. CONDENSER
- C28 100 P.F. CONDENSER
- C29 100 P.F. CONDENSER
- C30 100 P.F. CONDENSER
- C31 100 P.F. CONDENSER
- C32 100 P.F. CONDENSER
- C33 100 P.F. CONDENSER
- C34 100 P.F. CONDENSER
- C35 100 P.F. CONDENSER
- C36 100 P.F. CONDENSER
- C37 100 P.F. CONDENSER
- C38 100 P.F. CONDENSER
- C39 100 P.F. CONDENSER
- C40 100 P.F. CONDENSER
- C41 100 P.F. CONDENSER
- C42 100 P.F. CONDENSER
- C43 100 P.F. CONDENSER
- C44 100 P.F. CONDENSER
- C45 100 P.F. CONDENSER
- C46 100 P.F. CONDENSER
- C47 100 P.F. CONDENSER
- C48 100 P.F. CONDENSER
- C49 100 P.F. CONDENSER
- C50 100 P.F. CONDENSER
- C51 100 P.F. CONDENSER
- C52 100 P.F. CONDENSER
- C53 100 P.F. CONDENSER
- C54 100 P.F. CONDENSER
- C55 100 P.F. CONDENSER
- C56 100 P.F. CONDENSER
- C57 100 P.F. CONDENSER
- C58 100 P.F. CONDENSER
- C59 100 P.F. CONDENSER
- C60 100 P.F. CONDENSER
- C61 100 P.F. CONDENSER
- C62 100 P.F. CONDENSER
- C63 100 P.F. CONDENSER
- C64 100 P.F. CONDENSER
- C65 100 P.F. CONDENSER
- C66 100 P.F. CONDENSER
- C67 100 P.F. CONDENSER
- C68 100 P.F. CONDENSER
- C69 100 P.F. CONDENSER
- C70 100 P.F. CONDENSER
- C71 100 P.F. CONDENSER
- C72 100 P.F. CONDENSER
- C73 100 P.F. CONDENSER
- C74 100 P.F. CONDENSER
- C75 100 P.F. CONDENSER
- C76 100 P.F. CONDENSER
- C77 100 P.F. CONDENSER
- C78 100 P.F. CONDENSER
- C79 100 P.F. CONDENSER
- C80 100 P.F. CONDENSER
- C81 100 P.F. CONDENSER
- C82 100 P.F. CONDENSER
- C83 100 P.F. CONDENSER
- C84 100 P.F. CONDENSER
- C85 100 P.F. CONDENSER
- C86 100 P.F. CONDENSER
- C87 100 P.F. CONDENSER
- C88 100 P.F. CONDENSER
- C89 100 P.F. CONDENSER
- C90 100 P.F. CONDENSER
- C91 100 P.F. CONDENSER
- C92 100 P.F. CONDENSER
- C93 100 P.F. CONDENSER
- C94 100 P.F. CONDENSER
- C95 100 P.F. CONDENSER
- C96 100 P.F. CONDENSER
- C97 100 P.F. CONDENSER
- C98 100 P.F. CONDENSER
- C99 100 P.F. CONDENSER
- C100 100 P.F. CONDENSER
- R-1 150 OHM RESISTOR
- R-2 150 OHM RESISTOR
- R-3 150 OHM RESISTOR
- R-4 150 OHM RESISTOR
- R-5 150 OHM RESISTOR
- R-6 150 OHM RESISTOR
- R-7 150 OHM RESISTOR
- R-8 150 OHM RESISTOR
- R-9 150 OHM RESISTOR
- R-10 150 OHM RESISTOR
- R-11 150 OHM RESISTOR
- R-12 150 OHM RESISTOR
- R-13 150 OHM RESISTOR
- R-14 150 OHM RESISTOR
- R-15 150 OHM RESISTOR
- R-16 150 OHM RESISTOR
- R-17 150 OHM RESISTOR
- R-18 150 OHM RESISTOR
- R-19 150 OHM RESISTOR
- R-20 150 OHM RESISTOR
- R-21 150 OHM RESISTOR
- R-22 150 OHM RESISTOR
- R-23 150 OHM RESISTOR
- R-24 150 OHM RESISTOR
- R-25 150 OHM RESISTOR
- R-26 150 OHM RESISTOR
- R-27 150 OHM RESISTOR
- R-28 150 OHM RESISTOR
- R-29 150 OHM RESISTOR
- R-30 150 OHM RESISTOR
- R-31 150 OHM RESISTOR
- R-32 150 OHM RESISTOR
- R-33 150 OHM RESISTOR
- R-34 150 OHM RESISTOR
- R-35 150 OHM RESISTOR
- R-36 150 OHM RESISTOR
- R-37 150 OHM RESISTOR
- R-38 150 OHM RESISTOR
- R-39 150 OHM RESISTOR
- R-40 150 OHM RESISTOR
- R-41 150 OHM RESISTOR
- R-42 150 OHM RESISTOR
- R-43 150 OHM RESISTOR
- R-44 150 OHM RESISTOR
- R-45 150 OHM RESISTOR
- R-46 150 OHM RESISTOR
- R-47 150 OHM RESISTOR
- R-48 150 OHM RESISTOR
- R-49 150 OHM RESISTOR
- R-50 150 OHM RESISTOR
- R-51 150 OHM RESISTOR
- R-52 150 OHM RESISTOR
- R-53 150 OHM RESISTOR
- R-54 150 OHM RESISTOR
- R-55 150 OHM RESISTOR
- R-56 150 OHM RESISTOR
- R-57 150 OHM RESISTOR
- R-58 150 OHM RESISTOR
- R-59 150 OHM RESISTOR
- R-60 150 OHM RESISTOR
- R-61 150 OHM RESISTOR
- R-62 150 OHM RESISTOR
- R-63 150 OHM RESISTOR
- R-64 150 OHM RESISTOR
- R-65 150 OHM RESISTOR
- R-66 150 OHM RESISTOR
- R-67 150 OHM RESISTOR
- R-68 150 OHM RESISTOR
- R-69 150 OHM RESISTOR
- R-70 150 OHM RESISTOR
- R-71 150 OHM RESISTOR
- R-72 150 OHM RESISTOR
- R-73 150 OHM RESISTOR
- R-74 150 OHM RESISTOR
- R-75 150 OHM RESISTOR
- R-76 150 OHM RESISTOR
- R-77 150 OHM RESISTOR
- R-78 150 OHM RESISTOR
- R-79 150 OHM RESISTOR
- R-80 150 OHM RESISTOR
- R-81 150 OHM RESISTOR
- R-82 150 OHM RESISTOR
- R-83 150 OHM RESISTOR
- R-84 150 OHM RESISTOR
- R-85 150 OHM RESISTOR
- R-86 150 OHM RESISTOR
- R-87 150 OHM RESISTOR
- R-88 150 OHM RESISTOR
- R-89 150 OHM RESISTOR
- R-90 150 OHM RESISTOR
- R-91 150 OHM RESISTOR
- R-92 150 OHM RESISTOR
- R-93 150 OHM RESISTOR
- R-94 150 OHM RESISTOR
- R-95 150 OHM RESISTOR
- R-96 150 OHM RESISTOR
- R-97 150 OHM RESISTOR
- R-98 150 OHM RESISTOR
- R-99 150 OHM RESISTOR
- R-100 150 OHM RESISTOR



FILTER CONDENSER BANK.

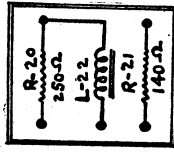
INTERSTAGE AND OUTPUT TRANSFORMER COLOR CODES

Output transformer
 Primary start-Blue
 Primary midtap-Red
 Primary finish-Blue
 Secondary start-Yellow
 Secondary finish-Black

Interstage transformer
 Primary start-Red-yellow 50/50
 Primary finish-Red-yellow tracer
 Secondary start-Green
 Secondary midtap-Yellow
 Secondary finish-Green

POWER TRANSFORMER COLOR CODE

Primary- Black-red tracer
 Primary tap- Black-red, 90/50
 Primary Black
 280 filament-Brown-green tracer
 280 filament-Brown-green tracer
 245 filament-Brown-yellow tracer
 245 filament-Brown-yellow tracer



MICROPHONE REACTOR - TERMINALS AND CONNECTIONS.

NOTE—Broken lines along dashed line indicate grounded shielding.