

Crosley Corp.

Model: 10-135

Chassis:

Year: Pre 1951

Power:

Circuit:

IF:

Tubes:

Bands:

Resources

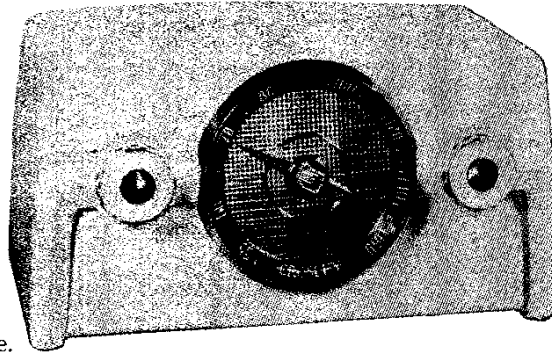
[Riders Volume 21 - CROSLEY 21-4](#)

[Riders Volume 21 - CROSLEY 21-5](#)

[Riders Volume 21 - CROSLEY 21-6](#)

MODELS 10-135, 10-136E, 10-137,
10-138, 10-139, 10-140

| Model No. | Color |
|-----------|---------------------------|
| 10-135 | Dulux White and Chrome |
| 10-136E | Ebony and Gold |
| 10-137 | Chartreuse and Gold |
| 10-138 | Maroon and Gold |
| 10-139 | Aqua and Chrome |
| 10-140 | Metallic Green and Chrome |



DESCRIPTION

TYPE: Five-tube, single band, Superheterodyne.

FREQUENCY RANGE: 540 to 1600 kc.

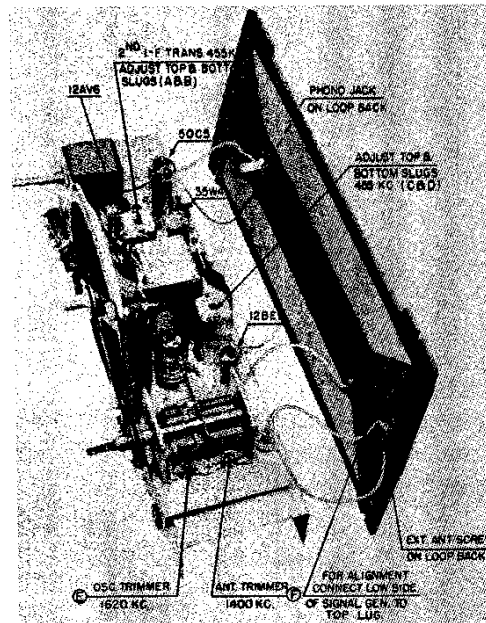
INTERMEDIATE FREQUENCY: 455 kc.

POWER SUPPLY: a.c.-d.c.

VOLTAGE RATING: 105-125 volts.

POWER CONSUMPTION: 30 watts.

POWER OUTPUT: 1 watt maximum.



CHASSIS, TOP VIEW

TUBE COMPLEMENT

| Type | Function |
|----------------|------------------------------------|
| 12BE6 | Converter |
| 12BA6 or 6BJ6 | I. F. Amplifier |
| 12AV6 or 12AT6 | Detector, AVC, 1st A. F. Amplifier |
| 50C5 | A. F. Power Output |
| 35W4 | Rectifier |

When using direct current it may be necessary to reverse the position of the power plug in the electric outlet for correct polarity.

Reversing the position of the power plug when alternating current is used may reduce hum.

Under no circumstances should a ground be connected to this receiver.

Phonograph connection—To use a record player with this receiver insert the pickup plug of the record player into the Phono jack on back of receiver (this automatically switches the receiver from radio to phonograph operation). Connect the power cord of the record player to a convenient electric outlet of the correct voltage and frequency. Operate the record player in the normal manner. The controls of the receiver operate the same as for radio programs.

To again use the receiver for radio operation it is necessary to remove the pickup plug of the record player from the Phono jack.

MODELS 10-135, 10-136, 10-137,
10-138, 10-139, 10-140

ALIGNMENT PROCEDURE

Connect an output meter across the speaker voice coil.

The r.f. signal input from the signal generator should be connected, through a 200 mmf. capacitor, to the external antenna screw. Connect the signal generator ground to the top lug on loop antenna (see Chassis Top View, page 1).

Position loop antenna to simulate its position when chassis and antenna are in cabinet.

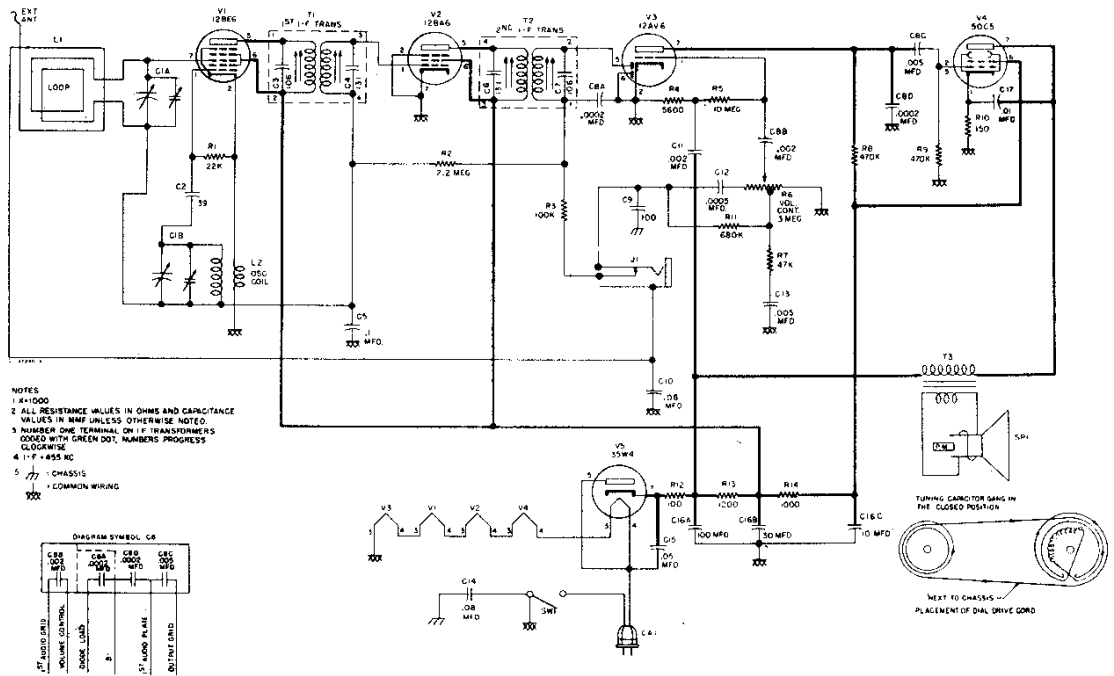
Turn the volume control on full and adjust the signal generator output to produce approximately midscale deflection of the output meter, but maintain signal generator output as low as possible to prevent AVC action in the receiver.

ALIGNMENT CHART

Alignment adjustment locations are shown on page 1, "CHASSIS, TOP VIEW."

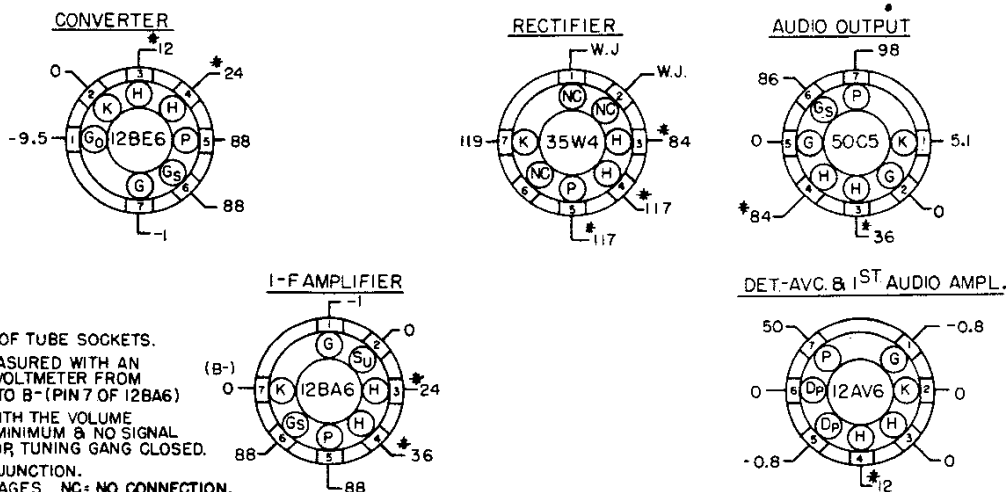
| Alignment Sequence | Signal Generator Output | | | Position of Dial Pointer | Adjust for Maximum Output |
|--------------------|-------------------------|----------------|---------------------|--------------------------|---------------------------|
| | Frequency in kc. | In Series with | To | | |
| 1 | 455 | 200 mmf. | External Ant. Screw | 1620 | * A, B, C & D |
| 2 | 1620 | 200 mmf. | External Ant. Screw | 1620 | E |
| 3 | 1400 | 200 mmf. | External Ant. Screw | 1400 | F |

* Repeat adjustments until maximum output is obtained.



On some sets of models 10-135 to 10-140 , R2 is a 3.3 megohm, 10%, 1/2 watt resistor instead of a 2.2 megohm resistor; and because of this C5 is an .05 mfd., 600 volt paper capacitor (Part No. 39001-17).

MODELS 10-135, 10-136,
10-137, 10-138, 10-139, 10-140



- NOTES:
 1. BOTTOM VIEW OF TUBE SOCKETS.
 2. VOLTAGES MEASURED WITH AN ELECTRONIC VOLTMETER FROM SOCKET LUG TO B-(PIN 7 OF 12BA6)
 3. MEASURED WITH THE VOLUME CONTROL AT MINIMUM & NO SIGNAL INTO THE LOOP TUNING GANG CLOSED.
 4. W.J. = WIRING JUNCTION.
 * = AC VOLTAGES. NC = NO CONNECTION.
 5. LINE VOLTAGE = 117 V., 60~AC.
 6. SOCKET VOLTAGE TOLERANCE ± 10%

SOCKET VOLTAGE CHART

REPLACEMENT PARTS LIST

| Symbol No. | Part No. | Description | Symbol No. | Part No. | Description |
|------------|--------------|---|-------------|-------------|--|
| C1A | B-147180 | Capacitor, Variable } Two Section | T1 | AC-139919-3 | Transformer, 1st I.F. |
| C1B | | Capacitor, Variable } Two Section | T2 | AC-139919-3 | Transformer, 2nd I.F. |
| C2 | C-137727-109 | Capacitor, 39mmf., 10%, 200v., ceramic | T3 | B-147171 | Transformer, Output |
| C3 | Part of T1 | Capacitor, 106 mmf. | AW-147289 | | Cabinet (10-135) |
| C4 | Part of T1 | Capacitor, 131 mmf. | AW-147779 | | Cabinet (10-136E) |
| C5 | 39001-19 | Capacitor, .1 mfd., 600 v., paper | AW-147806 | | Cabinet (10-137) |
| C6 | Part of T2 | Capacitor, 131 mmf. | AW-147807 | | Cabinet (10-138) |
| C7 | Part of T2 | Capacitor, 106 mmf. | AW-147805 | | Cabinet (10-139) |
| C8A | C-144675-1 | Capacitor, .0002 mfd., 500v. } Four Section | AW-147848 | | Cabinet (10-140) |
| C8B | | Capacitor, .002 mfd., 500v. } | W-139921 | | Clip (Mtg.), I.F. Transformer |
| C8C | | Capacitor, .005 mfd., 500v. } | W-131154-1 | | Cotter (External), Pointer Pulley |
| C8D | | Capacitor, .0002 mfd., 500v. } | W-147216 | | Cup (Suction) Cabinet Feet |
| C9 | B-143686-3 | Capacitor, 100 mmf., 500v., disc ceramic | C-147164-1 | | Escutcheon, Dial (10-135) |
| C10 | 39001-19 | Capacitor, .1 mfd., 600v., paper | D-147164-2 | | Escutcheon, Dial (10-136E, 10-137) |
| C11 | 39001-74 | Capacitor, .002 mfd., 600v., paper | D-147164-4 | | Escutcheon, Dial (10-138) |
| C12 | 39001-5 | Capacitor, .0005 mfd., 600v., paper | D-147164-5 | | Escutcheon, Dial (10-139) |
| C13 | 39001-11 | Capacitor, .005 mfd., 600., paper | D-147164-6 | | Escutcheon, Dial (10-140) |
| C14 | 39001-19 | Capacitor, .1 mfd., 600v., paper | B-147192 | | Gasket (Rubber), Escutcheon |
| C15 | 39001-17 | Capacitor, .05 mfd., 600v., paper | B-147160 | | Gasket (Rubber), Speaker |
| C16A | B-147174 | Capacitor, 100 mfd., 150v. } Three | B-147161-1 | | Grille, Dial (10-135) |
| C16B | | Capacitor, 30 mfd., 150v. } Section | AB-147878-1 | | Grille, Dial (10-136E) |
| C16C | | Capacitor, 10 mfd., 150v. } Electrolytic | C-147161-3 | | Grille, Dial (10-137) |
| C17 | 39001-13 | Capacitor, .01 mfd., 600v., paper | C-147161-4 | | Grille, Dial (10-138) |
| R1 | 39373-60 | Resistor, 22,000 ohm, 1/2w. | C-147161-5 | | Grille, Dial (10-139) |
| R2 | 39373-97 | Resistor, 2.2 megohm, 1/2w. | C-147161-6 | | Grille, Dial (10-140) |
| R3 | 39373-74 | Resistor, 100,000 ohm, 1/2w. | W-147245 | | Hanger, Wall Mtg. |
| R4 | 39374-34 | Resistor, 5600 ohm, 10%, 1/2w. | AB-147159-1 | | Knob (10-135) |
| R5 | 39373-107 | Resistor, 10 megohm, 1/2w. | AB-147159-2 | | Knob (10-136E) |
| R6 | B-147179 | Control, Volume (3 megohm, Tap 300,000 ohm) | AC-147159-3 | | Knob (10-137) |
| R7 | 39373-67 | Resistor, 47,000 ohm, 1/2w. | AC-147159-4 | | Knob (10-138) |
| R8 | 39373-87 | Resistor, 470,000 ohm, 1/2w. | AC-147159-5 | | Knob (10-139) |
| R9 | 39373-87 | Resistor, 470,000 ohm, 1/2w. | AC-147159-6 | | Knob (10-140) |
| R10 | 39373-16 | Resistor, 150 ohm, 1/2w. | W-147275 | | Mounting (Rubber), Speaker |
| R11 | 39373-90 | Resistor, 680,000 ohm, 1/2w. | W-45580-2 | | Mounting (Rubber), Var. Capacitor |
| R12 | 39374-189 | Resistor, 100 ohm, 10%, 2w. | B-94704-22 | | Nut (Speed), Escutcheon |
| R13 | 39374-114 | Resistor, 1200 ohm, 10%, 1w. | C-147149-1 | | Pointer, Dial (10-135, 10-139, 10-140) |
| R14 | 39373-33 | Resistor, 1000 ohm, 1/2w. | D-147149-2 | | Pointer, Dial (10-136E, 10-137) |
| CA1 | C-132300-9 | Cable & Plug Assy., Power | D-147149-3 | | Pointer, Dial (10-138) |
| J1 | W-147213 | Connector, Phono | W-147181 | | Pulley, Dial Pointer |
| L1 | AC-147239 | Loop Antenna & Back Assy. | W-142732 | | Shield, Tube |
| L2 | AW-146323 | Coil, Oscillator | 39462-2 | | Socket, Tube |
| SP1 | AD-145956-2 | Speaker (5 1/4" P.M.) | W-51752 | | Spring, Drive Cord |
| SW1 | Part of R6 | Switch, Power | B-147170 | | Support, Pointer Pulley |
| | | | W-134916 | | Washer (Spring), Pointer Pulley |