

## Gamble-Skogmo, Inc.

**Model: 650 A-B-C**

**Chassis:**

**Year: Pre October 1937**

**Power:**

**Circuit:**

**IF:**

**Tubes:**

**Bands:**

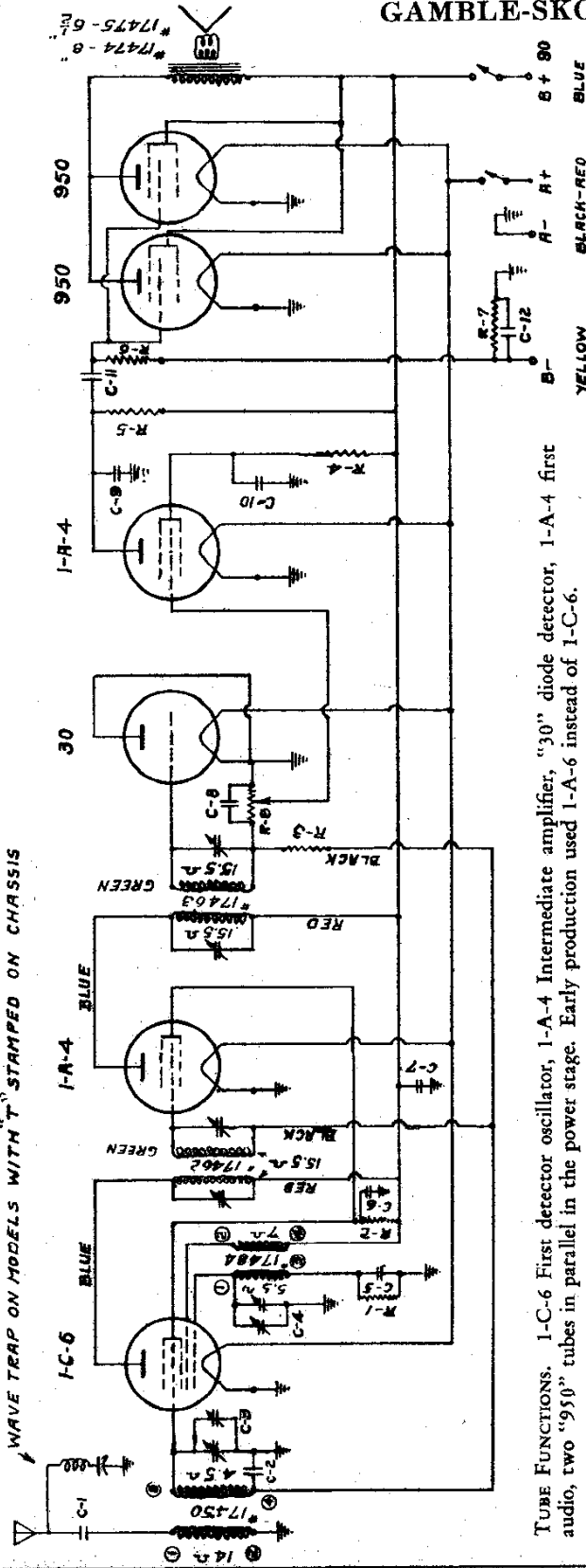
**Resources**

**Riders Volume 8 - GAMBLE 8-30**

MODEL 650 A-B-C

GAMBLE-SKOGMO, INC.

Schematic, Alignment

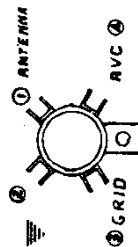
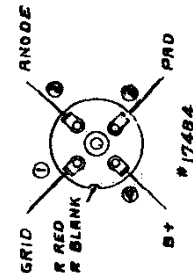


TUBE FUNCTIONS. 1-C-6 First detector oscillator, 1-A-4 Intermediate amplifier, "30" diode detector, 1-A-4 first audio, two "950" tubes in parallel in the power stage. Early production used 1-A-6 instead of 1-C-6.

I.F. FREQUENCY 456 K.C.  
B.C. FREQUENCY 540 K.C. TO 1725 K.C.

- R-1 50,000
- R-2 15,000
- R-3 2-MEG.
- R-4 500,000
- R-5 100,000
- R-6 1 MEG.
- R-7 4.50
- R-8 500,000 VOL. CONTROL # 17451

- C-1 .01 200 V.
- C-2 .05 200 V.
- C-3 } .00037 TUNING COND.
- C-4 } .0005
- C-5 } .0005 PHD 200 V.
- C-6 } .25 200 V.
- C-7 } .0005 600 V.
- C-8 } .0005 600 V.
- C-9 } .05 200V.
- C-10 } .01 200V.
- C-11 } .01 200V.
- C-12 } 10 MFD. 25 V. ELECT.



LOOKING AT PLAIN END OF COIL

K.R.C. 5-6-35

## BATTERY RADIO

ALIGNMENT. IF and Broadcast alignment same as Model 11-B. For IF, connect signal generator to grid of 1-C-6 tube, be sure tuning condenser is open.

CODE INTERFERENCE. This may be noticeable in regions close to the Great Lakes and is due to ship to shore radiotelegraph service being received directly on the IF amplifier and usually comes in regardless of tuning. All late production of this model going into Great Lakes territory were equipped with a wave trap which greatly reduces such interference. Such sets had the letter "I" marked on back of chassis and on carton. This wave trap No. 17736 may be added to any other production sets as shown in the circuit diagram. After installation it must be tuned to minimum response to a 456 signal applied to the antenna lead or to minimum reception of the code interference.